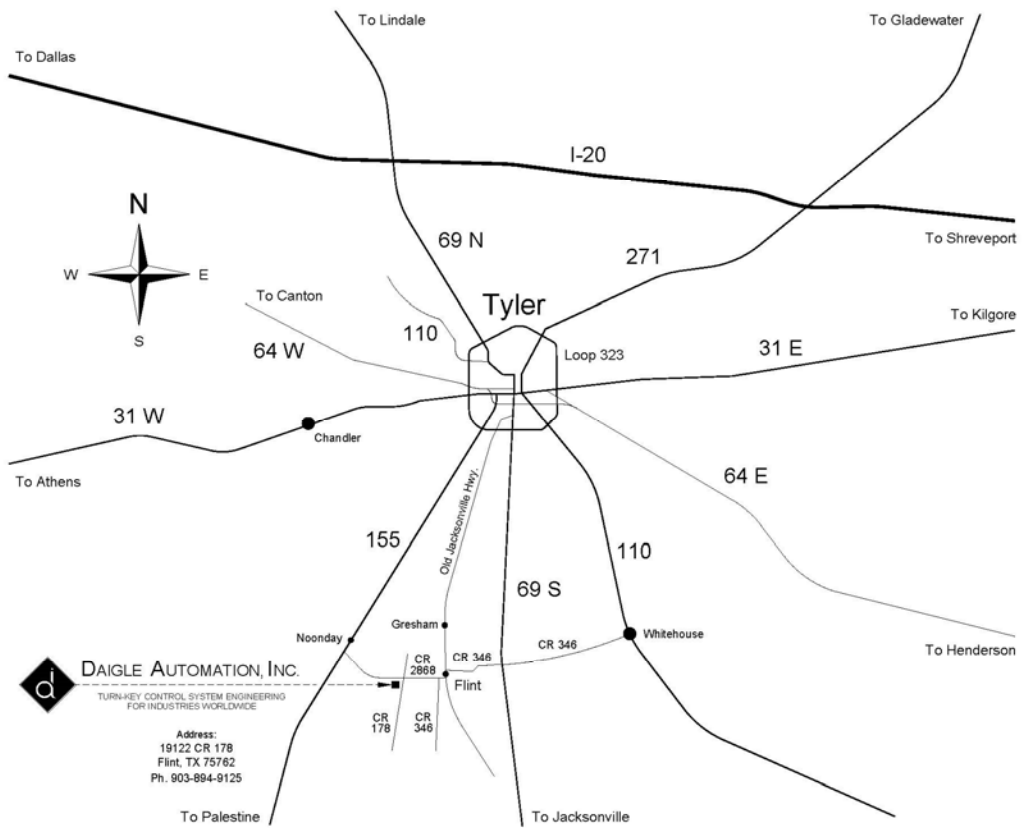




Certified UL508A and Hazardous Locations Panel Shop



**DAIGLE AUTOMATION, INC.**  
TURN-KEY CONTROL SYSTEM ENGINEERING  
FOR INDUSTRIES WORLDWIDE

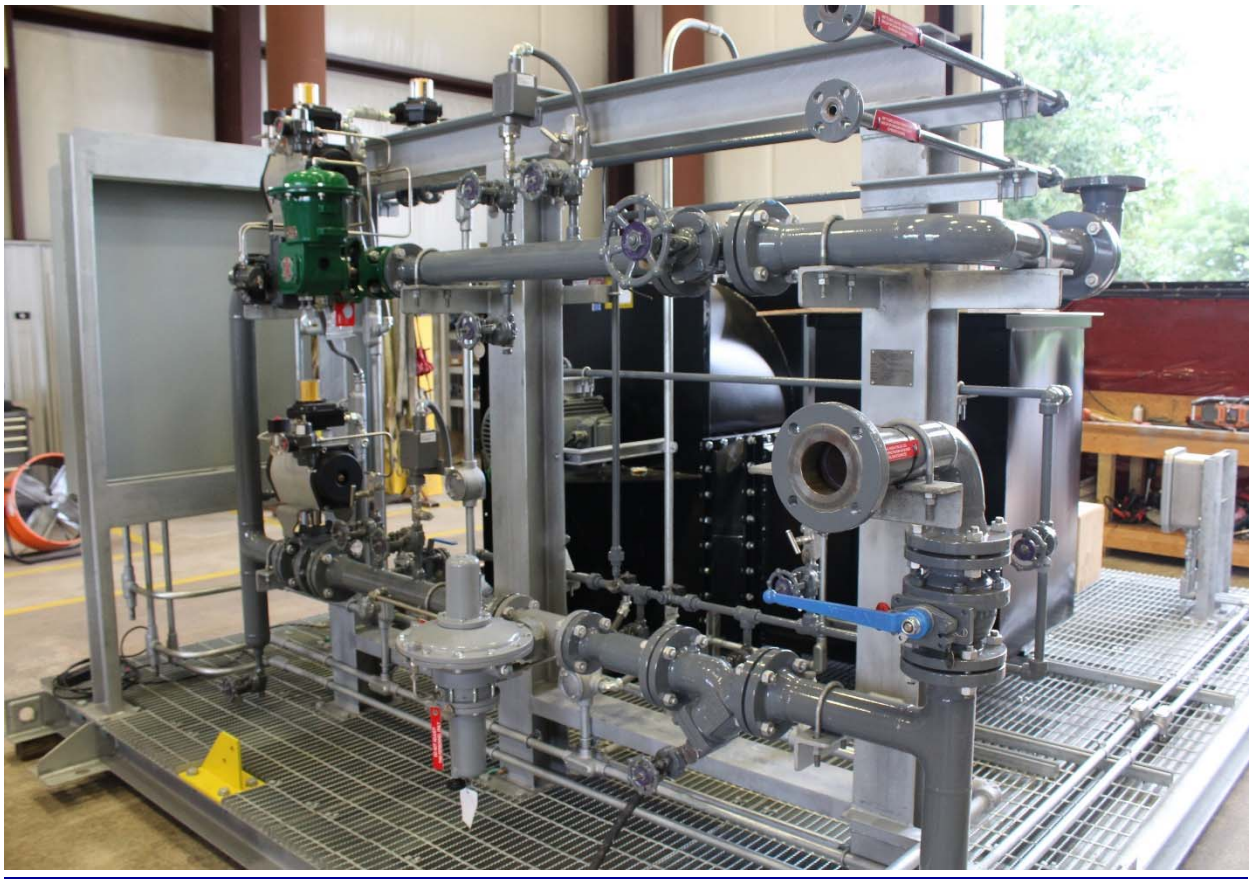
Address:  
19122 CR 178  
Flint, TX 75762  
Ph. 903-894-9125

**DAIGLE AUTOMATION, INC.**  
19122 CR 178, Flint, TX 75762



**DAIGLE**  
AUTOMATION, Inc.

# DAICCC: COMBUSTION MANAGEMENT SYSTEM COMBUSTION CURVE CONTROL



Phone: 903-894-9125

[www.daigleautomation.com](http://www.daigleautomation.com)

## **SKID PACKAGE:**

Piping sizes from 1" to 6"

- Standard packages
- Painted/Galvanized
- With/Without Combustion Blower
- Fuel Train Design per ASME B31.3
- Fisher V Ball DVC6200
- Pilot and Main Double Block and Bleed
- UV Scanner
- O2 Probe
- Quick and easy installation
- -20°F to +150°F Operating Mechanical Design



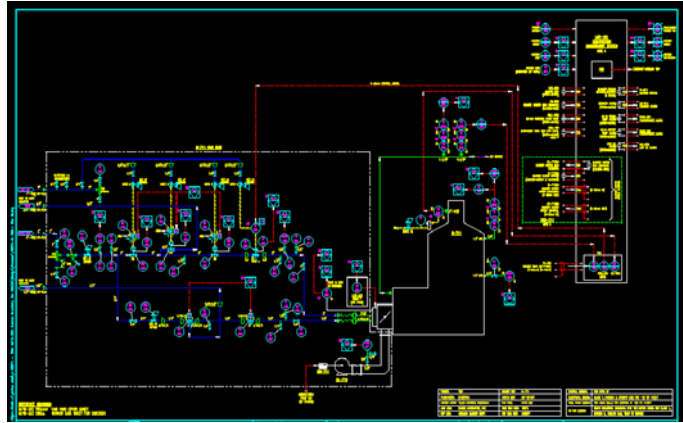
## **PANEL DESIGNS:**

Design for single burner forced draft or natural applications

- SIL rated processor
- Hardwired interfaces
- Modbus TCP interface
- Class 1 Division 2 C&D (Group B optional)
- Design per: NFPA 87
- A-B HMI with cover
- A-B Guard Logix PLC
- -20°F to +120°F Operating Electrical Design

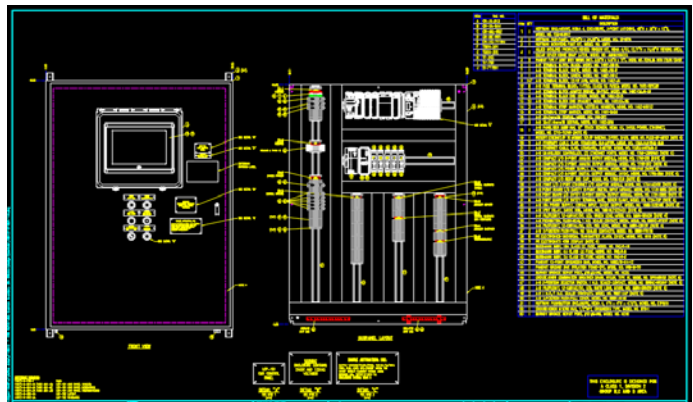


## P&IDs:



## CONTROL PANEL:

- Layout with BOM
- Schematics
- Interconnects



## PLANT 3D:

### Engineering Documents:

- Instrument Spec Sheets
- C&E, Operation Manual, Modbus Map, Commissioning Manual
- FAT Document

### Quality Documents:

- Quality Inspection Matrix
- Welding PQR/WPQ/WPS
- Paint Procedure
- Paint/Galvanizing Reports
- MTRs
- Quality, Pressure, Paint/Galvanizing, PT/RT Test Reports
- Heat/Weld Maps
- Flange Torque Report and Maps

